

TO:

FROM:

Accordion to Me...

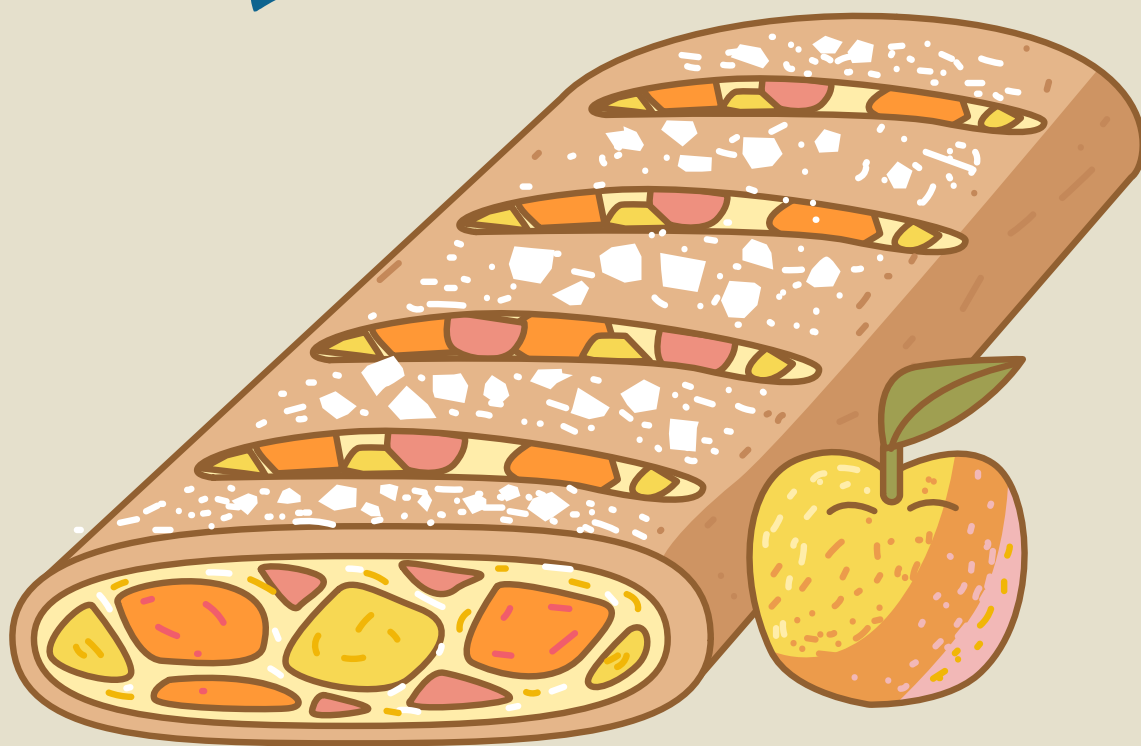


YOU'D MAKE A GREAT VALENTINE

TO:

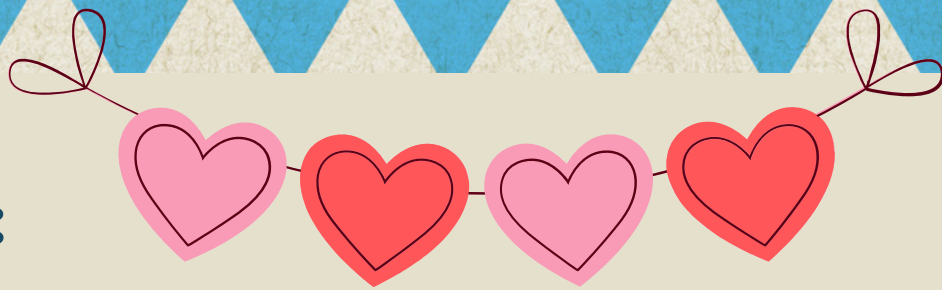
FROM:

You're Sweeter



than Strudel!

TO:



FROM:

You're the Hans

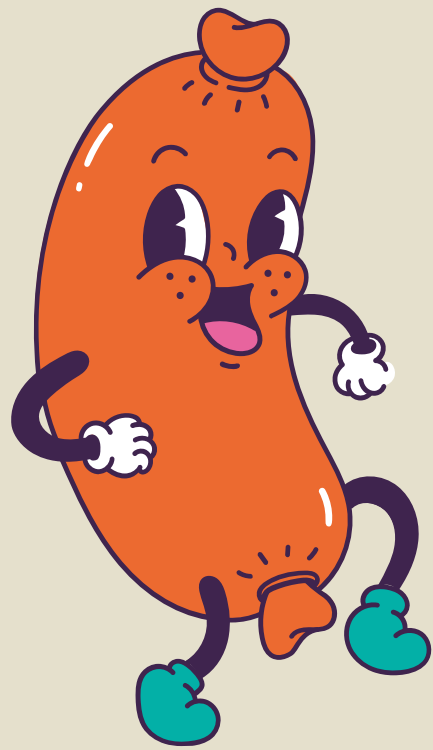


To my Frieda

TO:

FROM:

Valentine's Day is



THE WURST

TO:

FROM:

Will You Beer My



Valentine?

TO:

FROM:

You're the Schnitzel

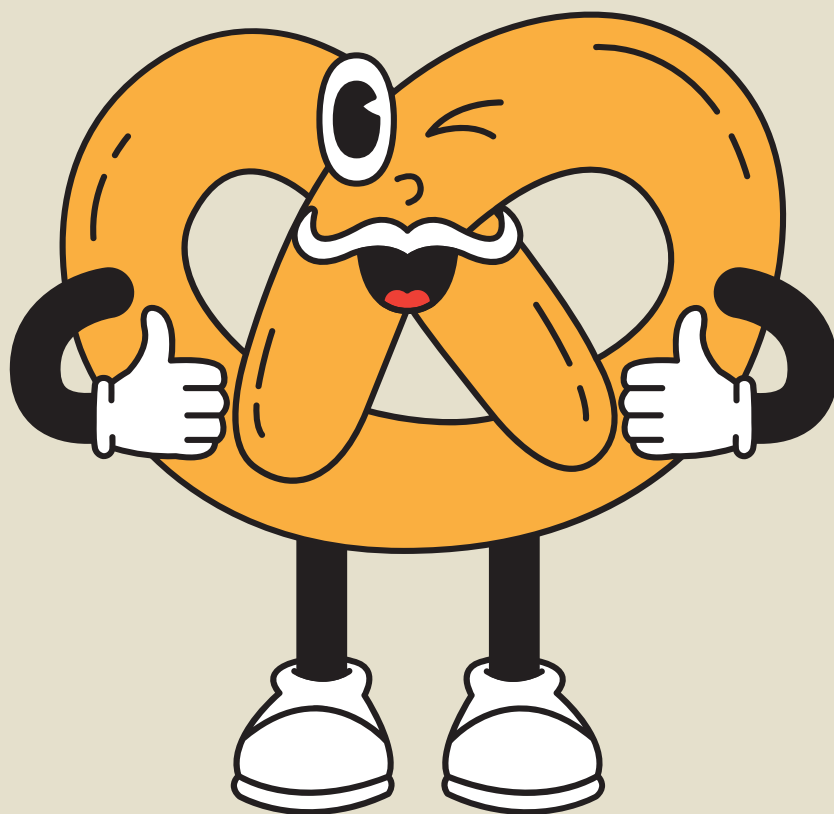


to my Strudel!

TO:

FROM:

Let's Get Knotty



TO:

FROM:



PROST

DON'T



GHOST



TO:

FROM:

I Wanna Hold Your

